

The slide features two large, abstract green geometric shapes. On the left is a solid green triangle pointing downwards. On the right is a complex, multi-layered green shape composed of several overlapping triangles and polygons in various shades of green, creating a dynamic, layered effect.

Welcome to Year 2!

September 2020

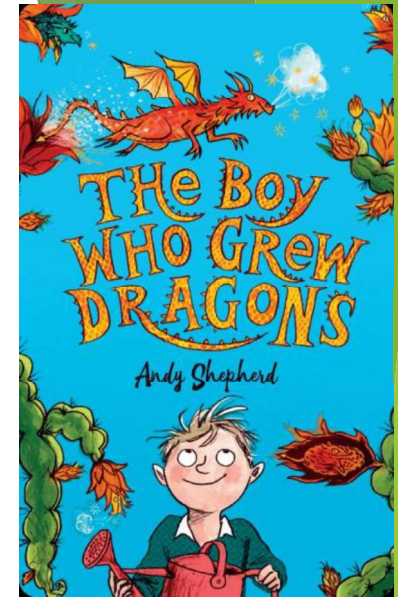
Your Child's Wellbeing.

- Our pupils mental health and well being is extremely important to us.
- We are a Rights Respecting Silver award school and each class has their own charter. We have regular sessions about RRS.
- We have regular PSHE and PATHS sessions where we talk about different feelings, communication, relationships and world news. We listen to each others views with respect.
- Every morning the children select an emotion - they state if they are feeling happy, relaxed, angry, sad. One to one conversations are then had with individuals who need a bit of extra support that day. We are always here to help!
- Each class now has a question box in their classroom. Any child can write question, a worry, statement or comment and put it into the box. Our staff will answer those questions.
- <https://www.gov.uk/guidance/supporting-pupils-wellbeing>



Reading and Writing at Beeches Infant School.

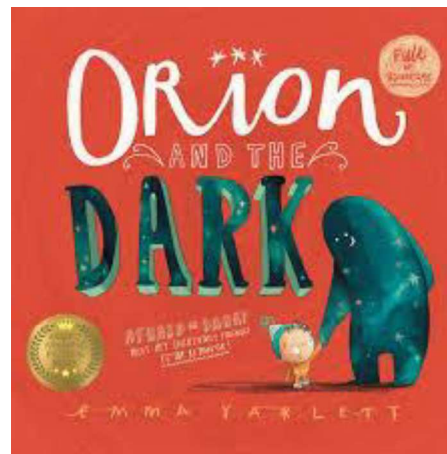
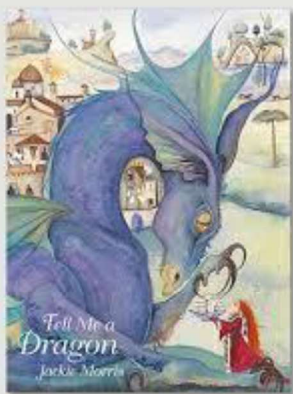
At Beeches we are passionate readers! We endeavour to provide our children with a wide range of reading material. We teach phonics daily to provide the children with the skills to become confident and independent readers. Guided reading is also taught daily. This is where the children practise their comprehension, inference and deduction skills. Reading a wide range of genres in all subject areas allows the children to experience new vocabulary.



Writing :

We provide a wide range of genres for the children to experience. We delve into the books so we can understand the story and explore the language used. We also look at how sentences are structured and punctuation that is used.

We then plan and write our own texts using ideas we have gathered. We also edit and present our own work.



Handwriting:

We teach pre-cursive handwriting.

The lead into letters and end curves get children ready for joined up writing.

One element of the greater depth writing criteria is that children should be joining their letters by the end of Year 2.

For the expected standard they should be using the lead and end curves.



Mathematics

Maths is taught through mastery. This means the children develop a deep and lasting understanding of number and how to apply their skills.

We teach in mixed ability groups, however children who need extra support are quickly identified and supported accordingly.

Structure of the lesson:-

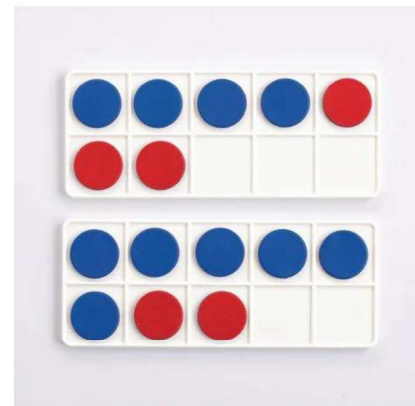
Mental oral

Have a go

Class teaching and modelling

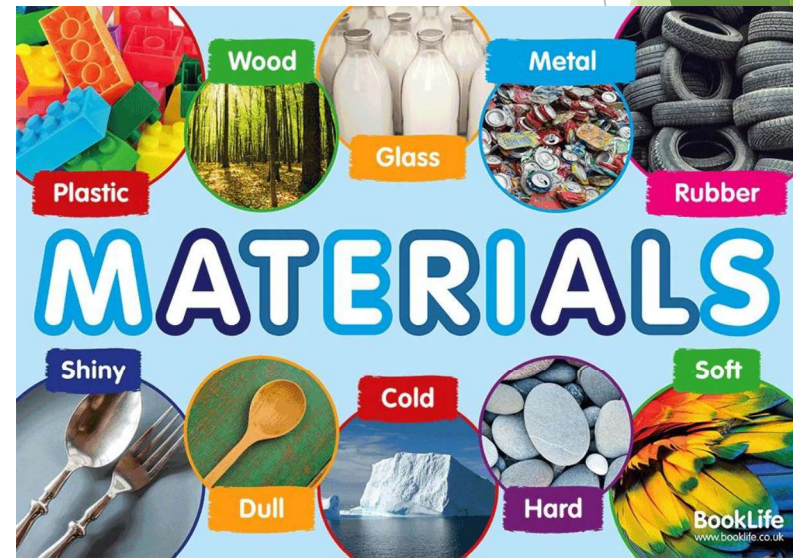
Chanting

Written work.



Science:

- Animals including humans
- Plants
- Materials
- Living things and their habitats.



Topics

- Autumn - Fire and Ice!
- Spring - Travel
- Summer - Birmingham

The topic areas are taught using a cross curricular approach. Subjects taught are history, geography, music, art, design and technology, PSHE. We also link English and maths lessons where appropriate.

We start all of our projects with a 'Stunning Start' so watch out for dragon footprints, lost animals or simulated aeroplane flights!



Assessment

- Children are assessed on a daily basis through conversations with staff, questioning and evidence in their books. This ensures we are planning and delivering effective lessons for every child.
- Each child in Year 2 will have a **statutory phonic assessment in November**. This is due to Covid 19, as the Year 1 assessment had to be cancelled due to lock down.
- **SATS will take place in May 2021**. The children will be assessed in reading, writing and mathematics. Question booklets and teacher judgements are used to assess.

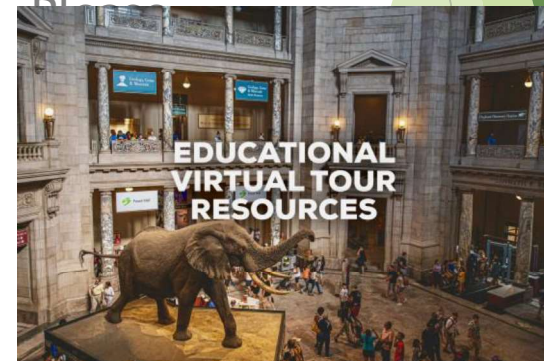


Homework.

- We will provide a reading book for your child. They will also have a reading diary. Please date in the diary when your child has read. We would recommend that they read everyday!
- Weekly homework is set every Friday. This will consist of maths and English challenges as well as phonics and spelling activities. Please bring back completed homework by Thursday each week so it can be checked and the new homework issued.
- **Remember that every child has access to Purple Mash and Bug Club.**

Experiences:

- As soon as the Government advises schools it is safe to organise class visits ,we will do so.
- We will be providing experiences at school for the children to ensure their learning is memorable.
- Visits to our forest school will go ahead in Year 2. You will be notified when this will be in plenty of time to organise wellies!
- Virtual experiences will also be used .
- The children can come to school in their P.E kits on the day of P.E. Black or grey sorts or joggers, white t shirt and school sweatshirt will be fine. Please ensure they wear pumps or trainers.



If you have any questions please contact
the office by phone or email your queries
to:

enquiry@beechesinf.bham.sch.uk

Please check your texts and the school
website regularly for information about
Year 2.

We look forward to working with you all.

